

DESIGN DESCRIPTION

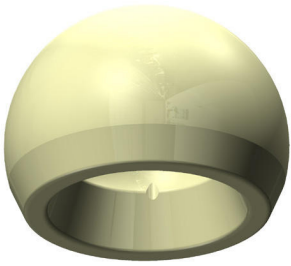


fig. left:
2M implacross® E head
(with Vitamin E)

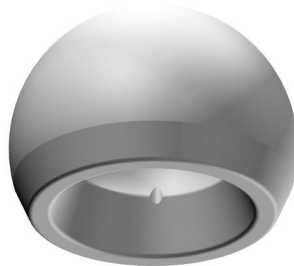


fig. right:
EcoFit® 2M head
(UHMWPE)



Highly polished articulating
surface of the EcoFit® 2M cups

The EcoFit® 2M head made of implacross® E (crosslinked polyethylene with vitamin E) or UHMW-PE is snapped on the regular head. Through this combination the system allows die combined articulating of the two bearings; between the head and the EcoFit® 2M head and the outer surface of the EcoFit® 2M head and the EcoFit® 2M cup. This design reduces the risk of subluxations while having a large range of motion. The EcoFit® 2M cups are available in cementless (42mm to 64mm) and cemented (44mm to 64mm) version. All cups are made of implavit®, CoCrMo-casting alloy. To enhance the cement mantle the outer surface of the cemented cup has grooves and notches. The cementless cups are coated with implaFix® coating made of pure titanium and HA to allow pressfit fixation and bony ingrowth.



outer surface of the cemented cup



outer surface of the cementless cup